

E-WM-9 requires the separating wall to be formed from 440 x 100 x 215mm dense aggregate blocks, within the range 1850-2300 kg/m<sup>3</sup>. It must be possible to identify through manufactured mark or feature that the constructed wall has used the correct block type.

Blocks that Robust Details Ltd (RDL) have currently acknowledged as carrying such identification features will appear on this list, the current version of which is available on our website [www.robustdetails.com](http://www.robustdetails.com).

Full details of E-WM-9 are shown in the Robust Details Part E Handbook.

**IMPORTANT - It is not acceptable to use blocks that do not appear on the current list**

### List of blocks accepted by RDL for use in E-WM-9

Manufacturer	Name of Block	Identification feature	Website	View
Masterblock	Masterdenz RD	Two, 10-12mm diameter grooves on one end of the block	<a href="http://www.masterblock.co.uk">www.masterblock.co.uk</a>	Page 2
Tarmac	Topcrete RD	Single 10mm diameter groove on each end of the block	<a href="http://www.tarmac.co.uk">www.tarmac.co.uk</a>	Page 3
Stowell Concrete Ltd	Stowell RD	Single 12mm diameter groove on one end of the block	<a href="http://www.stowellconcrete.co.uk">www.stowellconcrete.co.uk</a>	Page 4
Lignacite Ltd	Lignacrete WM9	Blocks factory pigmented red	<a href="http://www.lignacite.co.uk">www.lignacite.co.uk</a>	Page 5
Besblock	Besblock dB Performer	Two, 10-12mm diameter grooves on one end of the block	<a href="http://www.besblock.co.uk">www.besblock.co.uk</a>	Page 6
Interfuse Ltd	Intercrete RD	Single 20mm diameter groove on each end of the block	<a href="http://www.interfuseblocks.com">www.interfuseblocks.com</a>	Page 7
Forticrete	Newcon RD	Single 20mm wide, 10mm deep groove on one end of the block	<a href="http://www.forticrete.co.uk">www.forticrete.co.uk</a>	Page 8
Gryphonn Concrete Products Ltd	Dense Concrete RD	Blocks factory pigmented red	<a href="http://www.gryphonn.co.uk">www.gryphonn.co.uk</a>	Page 9
Plasmor Concrete Products Ltd	PLASCON	Single 15mm diameter groove on one end of the block	<a href="http://www.plasmor.co.uk">www.plasmor.co.uk</a>	Page 10

If you are a block manufacturer and have a dense aggregate block that you believe meets RDL's identification criteria and you wish to be considered for inclusion on the list above please E-mail [technical@robustdetails.com](mailto:technical@robustdetails.com) or write to:

Robust Details Ltd, Davy Avenue, Knowlhill,  
Milton Keynes, MK5 8NB

# Solid dense aggregate block separating wall taken from raft foundations for use in houses

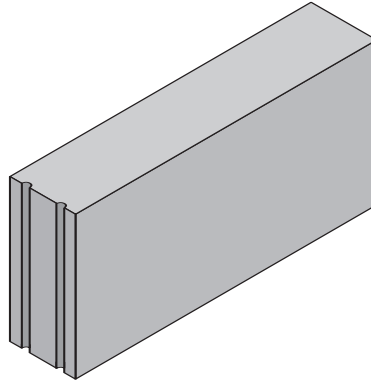
E-WM-9

Masterblock: Masterdenz RD

Identified by: Two, 10-12mm diameter grooves on one end of the block



End elevation



Isometric view



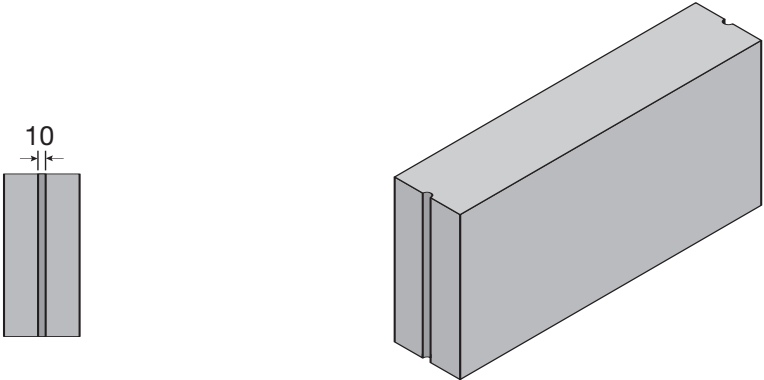
Appearance of Masterdenz RD separating wall as built

# Solid dense aggregate block separating wall taken from raft foundations for use in houses

E-WM-9

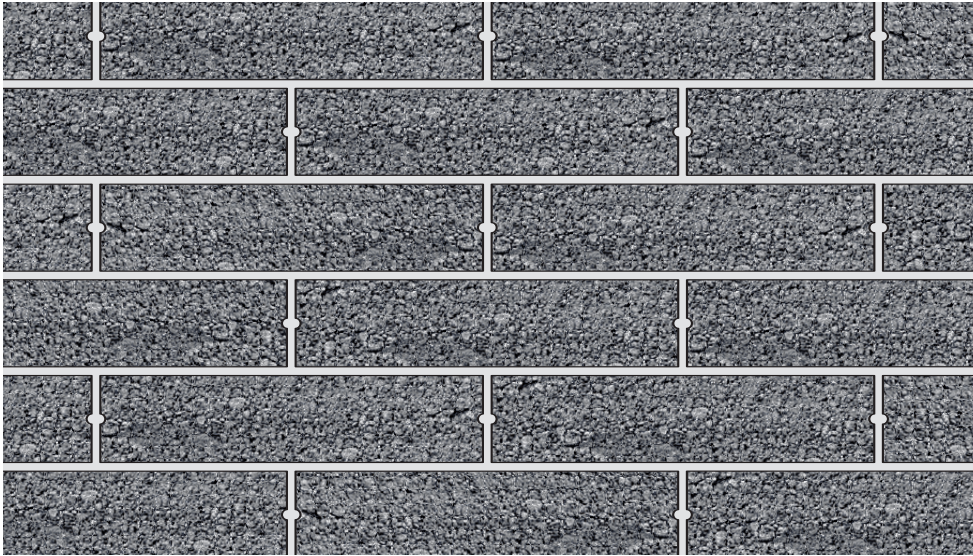
Tarmac: Topcrete RD

Identified by: Single 10mm diameter groove on each end of the block



End elevation

Isometric view



Appearance of Topcrete RD separating wall as built

# Solid dense aggregate block separating wall taken from raft foundations for use in houses

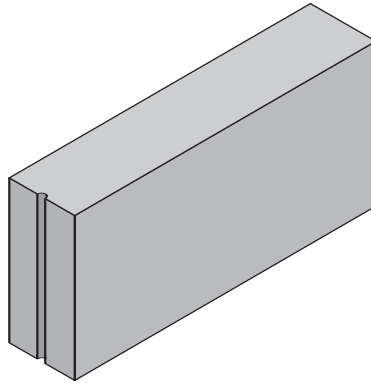
E-WM-9

Stowells Concrete Ltd: Stowells RD

Identified by: Single 12mm diameter groove on one end of the block



End elevation



Isometric view



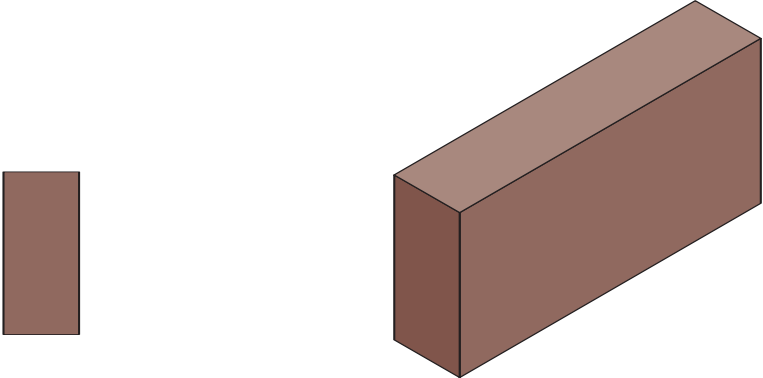
Appearance of Stowells RD separating wall as built

# Solid dense aggregate block separating wall taken from raft foundations for use in houses

E-WM-9

Lignacite Ltd: Lignacrete WM9

Identified by: Blocks factory pigmented red



End elevation

Isometric view



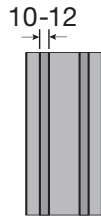
Appearance of Lignacite WM9 separating wall as built

# Solid dense aggregate block separating wall taken from raft foundations for use in houses

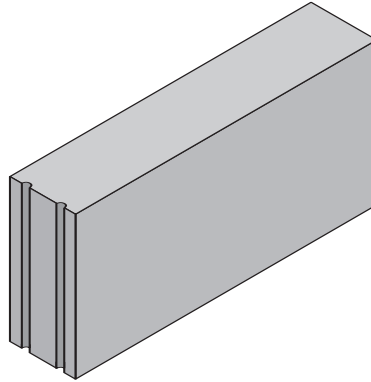
E-WM-9

Besblock: Besblock dB Performer

Identified by: Two, 10-12mm diameter grooves on one end of the block



End elevation



Isometric view



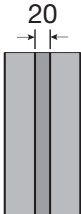
Appearance of Besblock dB Performer separating wall as built

# Solid dense aggregate block separating wall taken from raft foundations for use in houses

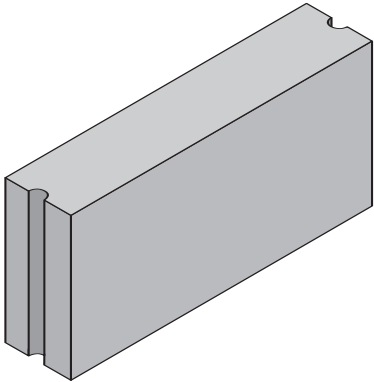
E-WM-9

Interfuse Ltd: Intercrete RD

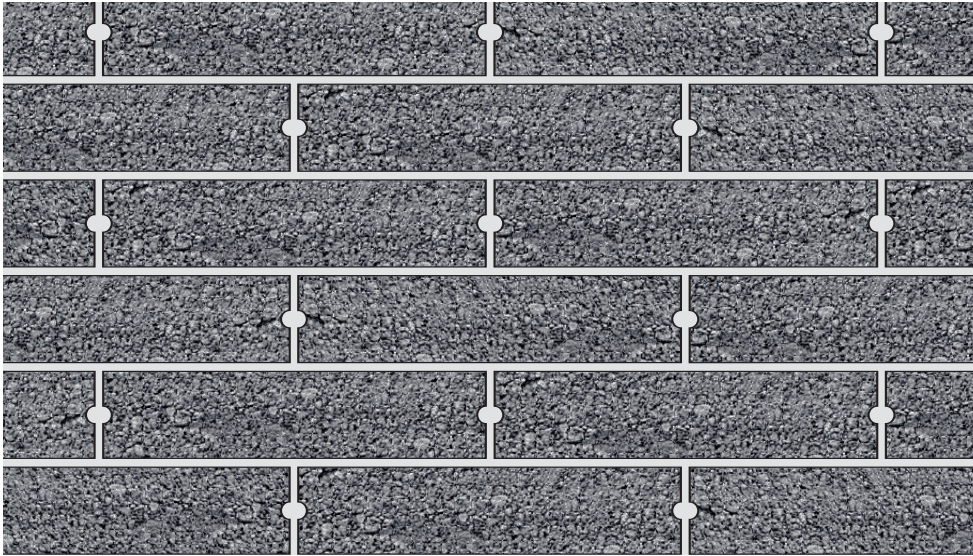
Identified by: Single 20mm diameter groove on each end of the block



End elevation



Isometric view



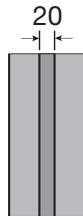
Appearance of Intercrete RD separating wall as built

# Solid dense aggregate block separating wall taken from raft foundations for use in houses

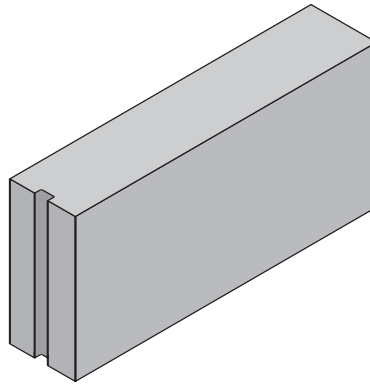
E-WM-9

Forticrete: Newcon RD

Identified by: Single 20mm wide, 10mm deep groove on one end of the block



End elevation



Isometric view



Appearance of Newcon RD separating wall as built



# Solid dense aggregate block separating wall taken from raft foundations for use in houses

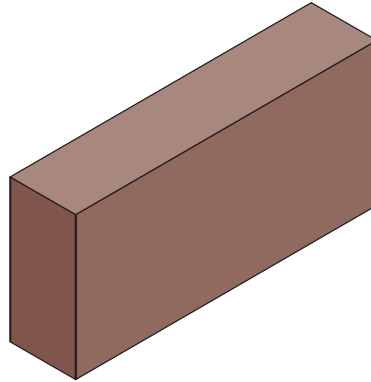
E-WM-9

Gryphonn Concrete Products Ltd: Dense Concrete RD

Identified by: Blocks factory pigmented red



End elevation



Isometric view



Appearance of Gryphonn Dense Concrete RD separating wall as built

# Solid dense aggregate block separating wall taken from raft foundations for use in houses

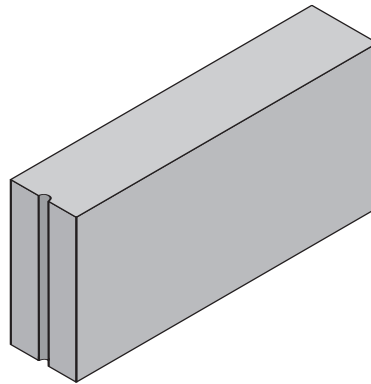
E-WM-9

Plasmor Concrete Products Ltd: PLASCON

Identified by: Single 15mm diameter groove on one end of the block



End elevation



Isometric view



Appearance of PLASCON separating wall as built